

Storm Brakes

SRC-C Static Rail Brake-Classical Spring Set, Hydraulic Release shown

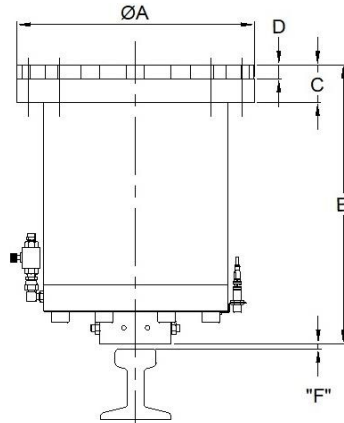
DRB-C Dynamic Rail Brake-Classical Spring Set, Hydraulic Release with smooth shoes available

STANDARD FEATURES

- Fabricated from high quality structural steel.
- Brake shoes easily removed and replaced
- Min Paint Thickness DFT: 200-275 μm

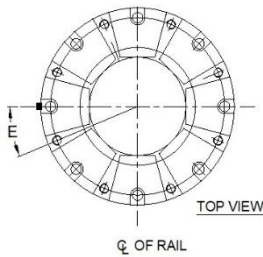
SUPPLIED WITH BRELX HPU HYDRAULIC POWER UNIT

- Prewired junction box
- Hand pump for manual release
- Solenoid valve with manual override
- Solenoid coil with LED indicator



OPERATING SPECIFICATIONS - SRB-220-C

SHOE EXTENSION "F", mm	APPLIED FORCE kN	BRAKING FORCE kN ($\mu = 0.5$)
0	595	-
8	517	258
12	479	239
16	440	220
20	402	201



1 x ØG MOUNTING HOLES
(for H CL10.9 BOLTS
SUPPLIED BY CUSTOMER)
ON ØJ BOLT CIRCLE

NOMINAL SPECIFICATIONS SRB-220-C

- NOMINAL BRAKING FORCE 220 kN @ SHOE EXTENSION "F" AND COEFFICIENT OF FRICTION $\mu=0.5$
- BRAKE MUST BE INSTALLED ABOVE THE RAIL AT A HEIGHT OF "B" mm + "F" (APPLICABLE PISTON ROD EXTENSION) +/- 2mm
- STATIC SERIES "S" OF RAIL BRAKES MUST BE USED FOR STATIC BRAKING (CRANE AT STOP POSITION)

MODEL	HOLDING CAPACITY (kN)	A	B	C	D	E	F	G	H	J	I
SRB-130-C	130	508	578	83	31	30	16	27	M24	457	8
SRB-220-C	220	508	610	83	31	22.5	16	27	M24	457	8
SRB-300-C	300	572	752	89	35	15	16	32	M30	478	12

Static models braking capacities calculated with coefficient of friction factor 0.5

All dimensions (mm) and capacities (kN) subject to change without notification.