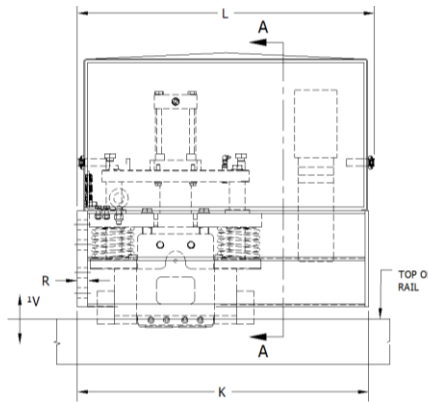
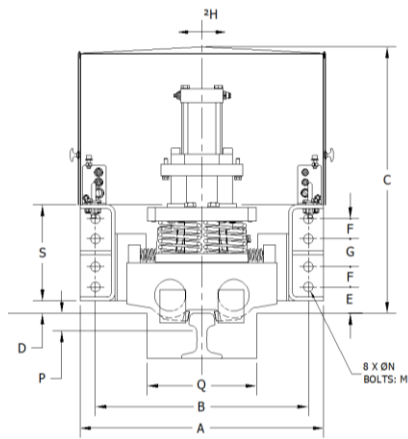


LRC-Spring Set, Hydraulic Release Rail Clamp shown
LRC-Spring Set, Electric Release Rail Clamp available

STANDARD FEATURES

- SF Side Flange mounting to the crane structure
- TF Top Flange mount available
- Stainless steel cover
- Min Paint Thickness: 200-275 µm
- Prewired junction box
- Hand pump and/or caging bolts for manual release
- Low leakage solenoid valve
- Solenoid coil 24 VDC
- Adjustable setting time from 2-30 seconds



SECTION A-A

MODEL	HOLDING CAPACITY (kN)	A	B	C	D	E	F	G	K	L	M	**N	*Q	P	R	S
LRC-HS-50-SF-GB	50	540	470	652	30	60	140	x	630	x	24	26	300	50	22	203
LRC-HS-100-SF	100	705	635	770	40	85	65	90	860	884	27	29	350	50	32	310
LRC-HS-150-SF	150															
LRC-HS-200-SF	200															
LRC-HS-250-SF	250															
LRC-HS-300-SF	300															
LRC-HS-350-SF	350	800	700	860	105	75	100	1200	1220	36	39	380	50	38	380	
LRC-HS-400-SF	400															
LRC-HS-450-SF	450															
LRC-HS-500-SF	500															
LRC-HS-600-SF	600															

*Q – Dimensions are relative to a specific rail size.

**N – LRC-50/100 series come with four holes bolt pattern.

¹ V-Vertical Rail Deviation (Float) ±5 relative to Rail Clamp enclosure at full rated capacity.

² H-Horizontal Rail Deviation (Float) ±25 relative to Rail Clamp enclosure at full rated capacity. Larger floats available upon request.

Models with holding capacities calculated with friction factor 0.5. Models with holding capacities calculated with friction factor 0.25 available upon request.

All dimensions (mm) and capacities (kN) subject to change without notification.