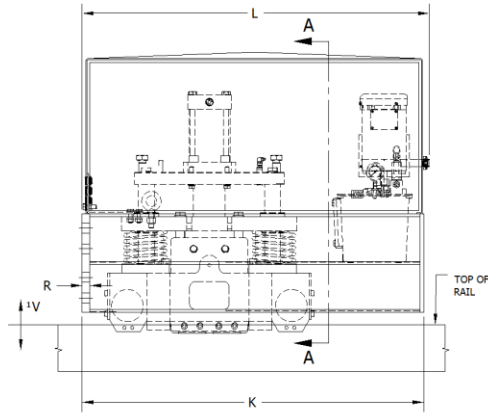
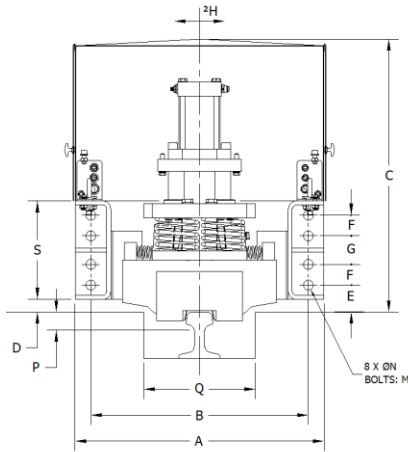


GRC-Spring Set, Hydraulic Release Rail Clamp shown

GRC-Spring Set, Electric Release Rail Clamp available

STANDARD FEATURES

- SF Side Flange mount to the crane structure
- TF Top Flange mount available (50 to 600 kN)
- Stainless steel removable cover with inspection doors
- Caging bolts for mechanical release
- Min Paint Thickness: 200-275 µm
- Prewired junction box
- Hand pump for manual release
- Solenoid valve with manual override
- Solenoid coil with LED indicator
- Integrated Temperature/Level Switch
- Adjustable setting time from 2-30 seconds



SECTION A-A

MODEL	HOLDING CAPACITY (kN)	A	B	C	D	E	F	G	K	L	M	N	*Q	P	R	S
GRC-HS-50-SF	50	578	530	687	30	75	50	65	896	916	20	22	280	50	22	254
GRC -HS-100-SF	100	705	635	775	40	85	65	90	885	909	27	29	340	50	32	310
GRC -HS-150-SF	150															
GRC -HS-200-SF	200															
GRC -HS-250-SF	250															
GRC -HS-300-SF	300															
GRC -HS-350-SF	350															
GRC -HS-400-SF	400	800	700	860	105	75	100	1200	1220	36	39	380	50	38	380	
GRC -HS-450-SF	450															
GRC -HS-500-SF	500															
GRC -HS-600-SF	600															
GRC-HS-800-SF	800	850	730	1050	120	110	170	1200	1220	39	42	380	50	38	380	
GRC-HS-900-SF	900															
GRC-HS-1000-SF	1000															

*Q & *P – Dimensions are subject to a specific rail size.

*Q – Dimensions are subject to a specific rail size

¹ V-Vertical Rail Deviation (Float) ±25 relative to Rail Clamp enclosure at full rated capacity.

² H-Horizontal Rail Deviation (Float) ±25 relative to Rail Clamp enclosure at full rated capacity. Larger floats available upon request.

Models with holding capacities calculated with friction factor 0.5. Models with holding capacities calculated with friction factor 0.25 available upon request.

All dimensions (mm) and capacities (kN) subject to change without notification.